



## FortiAuthenticator™

User Identity Management and Single Sign-On



# FortiAuthenticator

FAC-200E, 400E, 1000D, 3000D, 3000E and FAC-VM

## User Identity Management and Single Sign-On

FortiAuthenticator user identity management appliances strengthen enterprise security by simplifying and centralizing the management and storage of user identity information.

### Enterprise Network Identity Policy

Network and Internet access is key for almost every role within the enterprise; however, this requirement must be balanced with the risk that it brings. The key objective of every enterprise is to provide secure but controlled network access enabling the right person the right access at the right time, without compromising on security.

Fortinet Single Sign-On is the method of providing secure identity and role-based access to the Fortinet connected network. Through integration with existing Active Directory or LDAP authentication systems, it enables enterprise user identity based security without impeding the user or generating work for network administrators. FortiAuthenticator builds on the foundations of Fortinet Single Sign-on, adding a greater range of user identification methods and greater scalability. FortiAuthenticator is the gatekeeper of authorization into the Fortinet secured enterprise network identifying users, querying access permissions from third-party systems and communicating this information to FortiGate devices for use in Identity-Based Policies.

FortiAuthenticator delivers transparent identification via a wide range of methods:

- Polling of an Active Directory Domain Controller;
- Integration with FortiAuthenticator Single Sign-On Mobility Agent which detects login, IP address changes and logout;
- FSSO Portal based authentication with tracking widgets to reduce the need for repeated authentications;
- Monitoring of RADIUS Accounting Start records.

## FortiAuthenticator FSSO Features

- Enables identity and role-based security policies in the Fortinet secured enterprise network without the need for additional authentication through integration with Active Directory
- Strengthens enterprise security by simplifying and centralizing the management of user identity information

### Additional FortiAuthenticator Features

- Secure Two-factor / OTP Authentication with full support for FortiToken
- RADIUS and LDAP Authentication
- Certificate management for enterprise VPN deployment
- IEEE802.1X support for wired and wireless network security



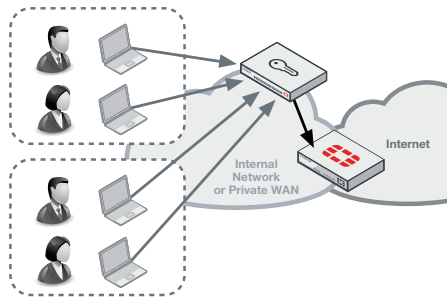
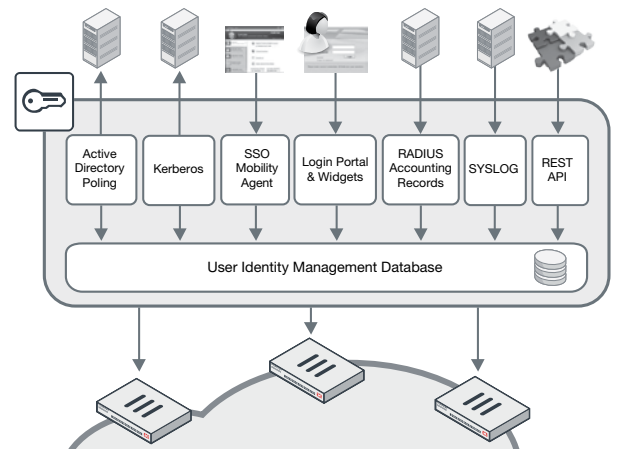
## HIGHLIGHTS

### Key Features & Benefits

FSSO Transparent User Identification	Zero impact for enterprise users.
Integration with LDAP and AD for group membership	Utilizes existing systems for network authorization information, reducing deployment times and streamlining management processes. Integration with existing procedures for user management.
Wide range of user identification methods	Flexible user identification methods for integration with the most diverse of enterprise environments.
Enablement of identity and role-based security	Allows security administrator to give users access to the relevant network and application resources appropriate to their role, while retaining control and minimizing risk.

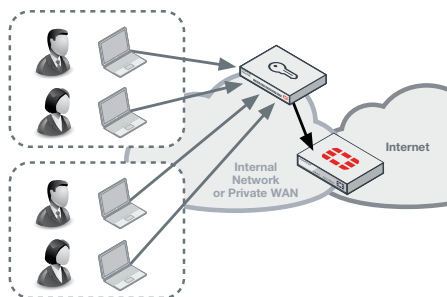
### FortiAuthenticator Single Sign-On User Identification Methods

FortiAuthenticator can identify users through a varied range of methods and integrate with third party LDAP or Active Directory systems to apply group or role data to the user and communicate with FortiGate for use in Identity based policies. FortiAuthenticator is completely flexible and can utilize these methods in combination. For example, in a large enterprise, AD polling or FortiAuthenticator SSO Mobility Agent may be chosen as the primary method for transparent authentication with fallback to the portal for non-domain systems or guest users.



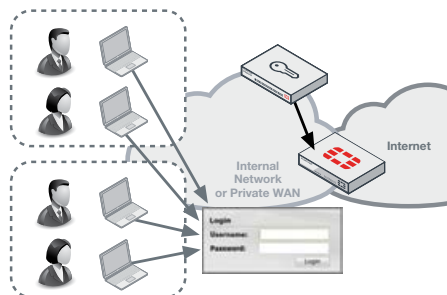
#### Active Directory Polling

User authentication into active directory is detected by regularly polling domain controllers. When a user login is detected, the username, IP and group details are entered into the FortiAuthenticator User Identity Management Database and according to the local policy, can be shared with multiple FortiGate devices.



#### FortiAuthenticator SSO Mobility Agent

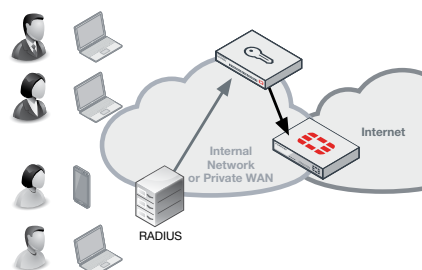
For complicated distributed domain architectures where polling of domain controllers is not feasible or desired, an alternative is the FortiAuthenticator SSO Client. Distributed as part of FortiClient or as a standalone installation for Windows PCs, the client communicates login, IP stack changes (Wired > Wireless, wireless network roaming) and logout events to the FortiAuthenticator, removing the need for polling methods.



#### FortiAuthenticator Portal and Widgets

For systems which do not support AD polling or where a client is not feasible, FortiAuthenticator provides an explicit authentication portal. This allows the users to manually authenticate to the FortiAuthenticator and subsequently into the network. To minimize the impact of repeated logins required for manual authentication, a set of widgets is provided for embedding into an organization's intranet which automatically logs the users in through the use of browser cookies whenever they access the intranet homepage.

## HIGHLIGHTS



### RADIUS Accounting Login

In a network which utilizes RADIUS authentication (e.g. wireless or VPN authentication), RADIUS Accounting can be used as a user identification method. This information is used to trigger user login and to provide IP and group information, removing the need for a second tier of authentication.

## Additional Functionality

### Strong User Identity with Two-factor Authentication

FortiAuthenticator extends two-factor authentication capability to multiple FortiGate appliances and to third party solutions that support RADIUS or LDAP authentication. User identity information from FortiAuthenticator combined with authentication information from FortiToken ensures that only authorized individuals are granted access to your organization's sensitive information. This additional layer of security greatly reduces the possibility of data leaks while helping companies meet audit requirements associated with government and business privacy regulations. FortiAuthenticator supports the widest range of tokens possible to suit your user requirements. With the physical time-based FortiToken 200, FortiToken Mobile (for iOS and Android), e-mail and SMS tokens, FortiAuthenticator has token options for all users and scenarios. Two-factor authentication can be used to control access to applications such as FortiGate management, SSL and IPsec VPN, Wireless Captive Portal login and third-party, RADIUS compliant networking equipment.

To streamline local user management, FortiAuthenticator includes user self-registration and password recovery features.

### Enterprise Certificate Based VPNs

Site-to-site VPNs often provide access direct to the heart of the enterprise network from many remote locations. Often these VPNs are secured simply by a preshared key, which, if compromised, could give access to the whole network. FortiOS support certificate-based VPNs; however, use of certificate secured VPNs has been limited, primarily due to the overhead and complexity introduced by certificate management. FortiAuthenticator removes this overhead involved by streamlining the bulk deployment of certificates for VPN use in a FortiGate environment by cooperating with FortiManager for the configuration and automating the secure certificate delivery via the SCEP protocol.

For client-based certificate VPNs, certificates can be created and stored on the FortiToken 300 USB Certificate store. This secure, pin-protected certificate store is compatible with FortiClient and can be used to enhance the security of client VPN connections in conjunction with FortiAuthenticator.

## Additional Features & Benefits

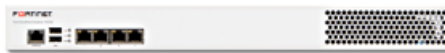
<b>RADIUS and LDAP User Authentication</b>	Local Authentication database with RADIUS and LDAP interfaces centralizes user management.
<b>Wide Range of Strong Authentication Methods</b>	Strong authentication provided by FortiAuthenticator via hardware tokens, e-mail, SMS, e-mail and digital certificates help to enhance password security and mitigate the risk of password disclosure, replay or brute forcing.
<b>User Self-registration and Password Recovery</b>	Reduces the need for administrator intervention by allowing the user to perform their own registration and resolve their own password issues, which also improves user satisfaction.
<b>Integration with Active Directory and LDAP</b>	Integration with existing directory simplifies deployment, speeds up installation times and reutilizes existing development.
<b>Certificate Management</b>	Streamlined certificate management enables rapid, cost-effective deployment of certificate-based authentication methods such as VPN.
<b>802.1X Authentication</b>	Deliver enterprise port access control to validate users connection to the LAN and Wireless LAN to prevent unauthorized access to the network.

# SPECIFICATIONS

	FORTIAUTHENTICATOR 200E	FORTIAUTHENTICATOR 400E	FORTIAUTHENTICATOR 1000D
<b>Hardware</b>			
10/100/1000 Interfaces (Copper, RJ-45)	4	4	4
SFP Interfaces	0	0	2
Local Storage	1x 1 TB Hard Disk Drive	2x 1 TB Hard Disk Drive	2x 2 TB Hard Disk Drive
Power Supply	Single 480W Auto Ranging (100V–240V)	Single 480W Auto Ranging (100V–240V)	Dual 480W Auto Ranging (100V–240V)
<b>System Performance</b>			
Total Users (Local + Remote)	500	2,000	10,000
FortiTokens	500	2,000	10,000
RADIUS Clients (NAS Devices)	50	200	1,000
User Groups	50	200	1,000
CA Certificates	10	10	50
User Certificates	2,500	10,000	50,000
<b>Dimensions</b>			
Height x Width x Length (inches)	1.75 x 17.05 x 13.86	1.73 x 17.24 x 16.38	3.5 x 17.24 x 14.49
Height x Width x Length (mm)	45 x 433 x 352	44 x 438 x 416	89 x 438 x 368
Weight	13.4 lbs (6.1 kg)	25.0 lbs (11.0 kg)	27.6 lbs (12.5 kg)
<b>Environment</b>			
Form Factor	Rack Mountable (1RU)	Rack Mountable (1RU)	Rack Mountable (2 RU)
Power Source	90–240V AC, 50–60 Hz	100–240V AC, 50–60 Hz	100–240V AC, 50–60 Hz
Maximum Current	4A / 110V, 2A / 220V	5A / 110V, 3A / 220V	5A / 110V, 3A / 220V
Power Consumption (Average)	60 W	102 W	115 W
Heat Dissipation	280 BTU/h	482 BTU/h	471 BTU/h
Operating Temperature	32–104°F (0–40°C)	32–104°F (0–40°C)	32–104°F (0–40°C)
Storage Temperature	-13–158°F (-25–70°C)	-13–167°F (-25–75°C)	-13–158°F (-25–70°C)
Humidity	5–95% non-condensing	5–95% non-condensing	5–95% non-condensing
<b>System</b>			
Standards Supported	10/100/1000 Base-TX (GE), IP, Telnet, HTTP 1.0/1.1, SSL, RS232, NTP Client (RFC1305), RADIUS (RFC2865), LDAP (RFC4510), x.509 (RFC5280), Certificate Revocation (RFC3280), PKCS#12 Certificate Import, PKCS#10 CSR Import (RFC2986), Online Certificate Status Protocol (RFC 2560), EAP-TLS (RFC2716), Simple Certificate Enrollment Protocol (SCEP)		
Management	CLI, Direct Console DB9 CLI, HTTPS	CLI, Direct Console DB9 CLI, HTTPS	CLI, Direct Console DB9 CLI, HTTPS
High Availability	Active-Passive HA and Config Sync HA	Active-Passive HA and Config Sync HA	Active-Passive HA and Config Sync HA
<b>Compliance</b>			
Safety	FCC Part 15 Class A, C-Tick, VCCI, CE, UL/cUL, CB	FCC Part 15 Class A, C-Tick, VCCI, CE, UL/cUL, CB	FCC Part 15 Class A, C-Tick, VCCI, CE, BSMI, KC, UL/cUL, CB, GOST



FortiAuthenticator 200E



FortiAuthenticator 400E



FortiAuthenticator 1000D



FortiAuthenticator 3000D



FortiAuthenticator 3000E

FortiAuthenticator  
Virtual Appliance

# SPECIFICATIONS

	FORTIAUTHENTICATOR 3000D	FORTIAUTHENTICATOR 3000E
<b>Hardware</b>		
10/100/1000 Interfaces (Copper, RJ-45)	4	4
SFP Interfaces	2	2
Local Storage	2x 2 TB Hard Disk Drive	2x 2 TB Hard Disk Drive
Power Supply	Dual 480W Auto Ranging (100V–240V)	Dual 480W Auto Ranging (100V–240V)
<b>System Performance</b>		
Total Users (Local + Remote)	40,000	40,000
FortiTokens	40,000	40,000
RADIUS Clients (NAS Devices)	4,000	4,000
User Groups	4,000	4,000
CA Certificates	50	50
User Certificates	200,000	200,000
<b>Dimensions</b>		
Height x Width x Length (inches)	3.5 x 17.2 x 14.5	3.5 x 17.2 x 25.5
Height x Width x Length (mm)	89 x 437 x 368	89 x 437 x 648
Weight	30.6 lbs (13.9 kg)	40.0 lbs (18.1 kg)
<b>Environment</b>		
Form Factor	Rack Mountable (2 RU)	Rack Mountable (2 RU)
Power Source	100–240V AC, 50–60 Hz	100–240V AC, 50–60 Hz
Maximum Current	10A /110V, 5A /220V	10A /110V, 5A /220V
Power Consumption (Average)	317 W	347 W
Heat Dissipation	1082 BTU/h	1325 BTU/h
Operating Temperature	50–95°F (10–35°C)	50–95°F (10–35°C)
Storage Temperature	-40–149°F (-40–65°C)	-40–158°F (-40–70°C)
Humidity	20–80% non-condensing	8–90% non-condensing
<b>System</b>		
Standards Supported	10/100/1000 Base-TX (GE), IP, Telnet, HTTP 1.0/1.1, SSL, RS232, NTP Client (RFC1305), RADIUS (RFC2865), LDAP (RFC4510), x.509 (RFC5280), Certificate Revocation (RFC3280), PKCS#12 Certificate Import, PKCS#10 CSR Import (RFC2986), Online Certificate Status Protocol (RFC 2560), EAP-TLS (RFC2716), Simple Certificate Enrollment Protocol (SCEP)	
Management	CLI, Direct Console DB9 CLI, HTTPS	CLI, Direct Console DB9 CLI, HTTPS
High Availability	Active-Passive HA and Config Sync HA	Active-Passive HA and Config Sync HA
<b>Compliance</b>		
Safety	FCC Part 15 Class A, C-Tick, VCCI, CE, BSMI, KC, UL/cUL, CB, GOST	FCC Part 15 Class A, C-Tick, VCCI, CE, BSMI, KC, UL/cUL, CB, GOST

VIRTUAL APPLIANCES	FAC-VM BASE	FAC-VM-100-UG	FAC-VM-1000-UG	FAC-VM-10000-UG	FAC-VM-100000-UG
<b>Capacity</b>					
Local Users	100	+100	+1,000	+10,000	+100,000
Remote Users	100	+100	+1,000	+10,000	+100,000
FortiTokens	200	+200	+2,000	+20,000	+200,000
NAS Devices	10	+10	+100	+1,000	+10,000
User Groups	10	+10	+100	+1,000	+10,000
CA Certificates	5	+5	+50	+500	+500
User Certificates	100	+100	+1,000	+10,000	+100,000
<b>Virtual Machine</b>					
Hypervisors Supported	VMware ESXi / ESX 3.5 / 4.0 / 4.1 / 5.0 / 5.5 / 6.0, Microsoft Hyper-V Server 2008 R2, 2012, and 2012 R2				
Maximum Virtual CPUs Supported	Unlimited				
Virtual NICs Required (Minimum / Maximum)	1 / 4				
Virtual Machine Storage (Minimum / Maximum)	60 GB / 2 TB				
Virtual Machine Memory Required (Minimum / Maximum)	512 MB / 64 GB				
High Availability Support	Active-Passive HA and Config Sync HA				

ORDER INFORMATION

Product	SKU	Description
FortiAuthenticator 200E	FAC-200E	4x GE RJ45 ports, 1x 1 TB HDD.
FortiAuthenticator 400E	FAC-400E	4x GE RJ45 ports, 2x 1 TB HDD.
FortiAuthenticator 1000D	FAC-1000D-E07S	4x GE RJ45 ports, 2x GE SFP, 2x 2 TB HDD.
FortiAuthenticator 3000D	FAC-3000D	4x GE RJ45 ports, 2x GE SFP, 2x 2 TB HDD.
FortiAuthenticator 3000E	FAC-3000E	4x GE RJ45 ports, 2x GE SFP, 2x 2 TB HDD.
FortiAuthenticator-VM License	FAC-VM-Base	Base FortiAuthenticator-VM with 100 user license. Unlimited vCPU.
	FAC-VM-100-UG	FortiAuthenticator-VM with 100 user license upgrade.
	FAC-VM-1000-UG	FortiAuthenticator-VM with 1,000 user license upgrade.
	FAC-VM-10000-UG	FortiAuthenticator-VM with 10,000 user license upgrade.
	FAC-VM-100000-UG	FortiAuthenticator-VM with 100,000 user license upgrade.
	FC1-10-0ACVM-248-02-12	1 Year 24x7 FortiCare Contract (1–500 users).
	FC2-10-0ACVM-248-02-12	1 Year 24x7 FortiCare Contract (1–1100 users).
	FC3-10-0ACVM-248-02-12	1 Year 24x7 FortiCare Contract (1–5100 users).
	FC4-10-0ACVM-248-02-12	1 Year 24x7 FortiCare Contract (1–10100 users).
	FC8-10-0ACVM-248-02-12	1 Year 24x7 FortiCare Contract (1–25100 users).
	FC5-10-0ACVM-248-02-12	1 Year 24x7 FortiCare Contract (1–50100 users).
	FC6-10-0ACVM-248-02-12	1 Year 24x7 FortiCare Contract (1–100100 users).
	FC9-10-0ACVM-248-02-12	1 Year 24x7 FortiCare Contract (1–500100 users).
	FC7-10-0ACVM-248-02-12	1 Year 24x7 FortiCare Contract (1–1M users).



GLOBAL HEADQUARTERS  
Fortinet Inc.  
899 Kifer Road  
Sunnyvale, CA 94086  
United States  
Tel: +1.408.235.7700  
www.fortinet.com/sales

EMEA SALES OFFICE  
905 rue Albert Einstein  
Valbonne 06560  
Alpes-Maritimes, France  
Tel: +33.4.8987.0500

APAC SALES OFFICE  
300 Beach Road 20-01  
The Concourse  
Singapore 199555  
Tel: +65.6395.2788

LATIN AMERICA SALES OFFICE  
Sawgrass Lakes Center  
13450 W. Sunrise Blvd., Suite 430  
Sunrise, FL 33323  
United States  
Tel: +1.954.368.9990